

## QUALITY USED MACHINERY

Manitou MLT627 2007 2260hrs	£28750
JCB 531.70 2006 3000hrs	£31250
JCB526S 2000	£18250
JD6630 2009 1003hrs 40kph	£45500
JD6830 2008 1450hrs 50kph	£49900
JD6930 2009 1350hrs 50kph	£56750
JD6220SE 2007 PQ40k c/wJD531 Loader	£29000
JD6910 2001 TLS front linkage	£22000
MF6255 2000, front linkage	£11750
JD6620 2005 7450hrs 40k Auto Power	£25750
JD 3200 2003 Air con 7200hrs	£14000
Case 7110 Magnum, 9377hrs	£12750
JD578 baler 2003 (Gone through workshop)	£11750
Claas 255 baler 2003 rotor cut auto lube	£7500
JD575 baler 1999, 25000 bales	£7650
JD572 baler 2005, 10000 bales	£9950
Claas 350 single rotor rake	£4000
Mac Hale 3pt mounted wrapper c/w engine	£7500
Harry West 11 ton Silage trailer very good	£6850
Marshall 10 ton silage trailer	£5300
TST 2050g tanker c/w 28.1x26 wheels	£6000
Lely 3m P/Harrow c/w Lely Drill excellent	£6850
Kuhn 3m P/Harrow c/w Accord Air Drill	£6500
Sweeper collector 7ftwide 3pt mounted	£1250

For further details please contact:

Cornthwaite Agricultural  
Tel: 01704 822343  
www.cornthwaiteag.co.uk

Agricultural Machinery  
Tel: 01270 624141  
www.ag-mac.co.uk

## LONELY HEARTS



Petite welsh beauty seeks connection.

I was made in the valleys  
Have spent time in alleys

Can carry a wee digger  
Or something a bit bigger

Sides made of mesh  
Help keep my loads fresh

With a gate at my rear  
All's safe don't you fear

4 wheels are a rollin  
Beware I don't get stolen

Ifor Williams 3.5ton trailer  
Tandem axle, sides and gate.

£1370

## SPECIAL PURCHASE



We will have on the Cheshire show stand, an example of our Reco Fella tedder range. For the last two years we have sold these great little machines straight off the stand, and this year, we aim to make it a hat trick! We will be taking a TH450 D Hydro which is a compact 4 rotor tedder, 4.5m width, and our best seller. It features Edge Spreading left or right, operated into position from the tractor cab, (to save grass flying into the hedge on headlands) and central hydraulic lifting, even on slopes, both sides lift evenly. The strong build quality, oscillating headstock and low traction point, as well as the use of shock absorbing telescopic struts, give exact driving stability with no pushing or pendulum motion. Once you've tried one of these machines, your immediately taken with how well they spread, and how well made they are.

On the show days, we will be offering the TH450D Hydro models for sale at a special price of **£4,500 + vat!**

As usual our big stock orders mean we have bought them right, so we can sell them right to you, honest machines at good value prices.



JUNE 2010

# NEWSLETTER

## STUART'S NEWS

### JOHN DEERE OPENS NEW MANUFACTURING FACILITY IN RUSSIA

This month I thought I would just keep you informed about John Deere's latest expansion.

**D**EERE & Company has officially opened its new manufacturing and parts distribution facility south of Moscow in Domodedovo. The John Deere Domodedovo facility is the company's largest single investment to date in Russia. The facility will manufacture agricultural, construction and forestry machinery as well as distribute service parts in the region.

"Russia has a tradition of embracing advanced equipment and modern agricultural and forestry management practices," said Deere & Company chairman and CEO Samuel R Allen at the facility's grand opening ceremony. "These are critical to the health and development of large-scale farming and forestry. They also tend to be a good match for the capabilities of John Deere products."

The new facility at Domodedovo is open just nine months after John Deere first announced its plans at the Russia-US Business Forum last summer. Deere received strong cooperation from the Russian Federal government, the Moscow Oblast, and the community of Domodedovo to open the factory within this short time frame.

Allen noted that most of the world's available arable land is already being farmed, that clean water is becoming increasingly scarce, and that infrastructure is needed in many parts of the world to bring crops and forestry materials to market.

"Russia has great advantages in all these areas and the potential to become one of the world's major food-producing regions," Allen said.

At the opening ceremony for the John Deere facility, Allen also said that Russia's future holds "...truly immense potential as a major provider of the renewable resources so vital to the world's economic and social wellbeing."

He added that Deere's future plans in Russia are supportive of the Russian government's objectives to boost the output of grains and other renewable resources and to make the farm and forestry sectors more commercially vibrant. Deere has stated that the new Domodedovo facility will include a new EurAsia Parts Distribution Centre and will manufacture products for the company's two major divisions, including large tractors and combines for use in agriculture and a series of products for use in construction and forestry. Both the parts distribution and manufacturing capabilities will help John Deere serve customers in Russia and throughout the Commonwealth of Independent States (CIS) and in other nearby markets.

In his remarks at the grand opening, Allen said: "Deere first sold products in Russia 100 years ago. Now, in addition to the new Domodedovo location, John Deere has a manufacturing site in Orenburg, offices in St Petersburg and Moscow, and over 70 sales and service locations located in Russia."

Regards  
**Stuart**

## Contents in this month

STUART'S NEWS

PARTS OFFER

SERVICE OFFER

ISLE OF MAN NEWS

NEW MEMBERS

LAWN CARE

USED EQUIPMENT ADVERT

CHESHIRE SHOW

LONELY HEARTS

TYRE SALE

SPECIAL PURCHASE

Cornthwaite Agricultural Ltd.  
Hall Lane, Bispham Green  
Near Ormskirk, Lancashire  
L40 3SB

Telephone: 01704 822343

Fax: 01704 822097

www.cornthwaiteag.co.uk

Agricultural Machinery  
(Nantwich) Ltd  
Millstone Lane, Nantwich  
CW5 5PJ

Tel: 01270 624141

Fax: 01270 624140

www.ag-mac.co.uk

## Cheshire Show

Preparations are in the final stages now for the Cheshire County Show, 2010 where we will have a stand on the 22nd and 23rd June. We will be taking machines from a cross section of our franchises, including Bailey, Manitou, Reco, KRM, McConnel, John Deere and more, and of course manufacturer reps will be in attendance for you to speak to about the latest machines on offer. We will also have items from our groundscares portfolio, including walk behind and ride on John Deere mowers, and a selection of Stihl products.



We will have the Quickfencer on show, which has won over 10 major awards, including the Gold Medal Award for this year's Highland Show.

We're hoping for good weather, but more importantly we're hoping plenty of you are able to come and see us.

## Tyres and wheels

### NEW TYRES

TRELLBORG 650/65R38 @£1275 each	TRELLBORG 540/65R28 @ £600 each
TRELLBORG 600/65R38 @ £965 each	TRELLBORG 540/65R24 @ £540 each
MITCH 20.8R38 (new) @ £875 each	MITCH (new) 16.9R28 @ £435 each
KLEIBER 20.8R38 (new) @ £825 each	KLEIBER (new) 420/85R28 @ £395 each
MITCH 480/65R28 (new) @ £400 each	CONTI (new) 16.9R30 @ £375 each
G/YEAR 600/65R28 (new) @ £725 each	PIRELLI (new) 16.9R28 @ £425 each

### USED TYRES

G/YEAR 420/70R28 (80%) @ £310 each	G/YEAR 540/65R24 (40%) @ £150 each
G/YEAR 600/65R38 (50%) @ £400 each	G/YEAR 480/70R28 (80%) @ £325 each
MITCH 650/75R38 (75%) @ £1250 each	MITCH 600/65R28 (75%) @ £550 each
CONTI 18.4R38 (80%) @ £525 each	CONTI 16.9R24 (80%) @ £350 each
CONTI 16.9R34 (75%) @ £275 each	CONTI 13.6R24 (75%) @ £200 each

### USED WHEELS

12.4R32 ADJ ROWCROPS BKT TYRES AS NEW	POA
9.5R48 ADJ REAR WITH 9.5R36FRONTS TO FIT 6410 V/CLEAN	@ £800 SET
550-45R22.5 FLOATAION TRAILER WHEELS 10 STUD	@ £POA



## LAWNCARE

The lawn cutting season is now upon us, the sun is finally shining and the first shoots of spring are well under way. Now is the time to dust down the lawn mower and give it a full service, checking engines, belts, cutterdecks and tyres. We have the facilities to assist you in that task. Available to you is our dedicated grounds care service technician, Mr Barry Prophett, with over 17 years horticultural knowledge and no job is too large or too small.



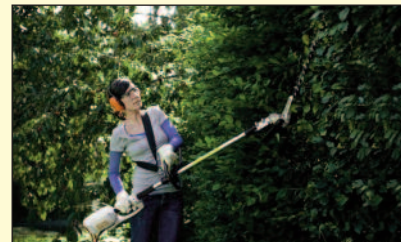
### Mowers – new and used

We have large stock of new and used machines available, ranging from 40cm electric powered lawn mowers up to 62" small compact tractors. With such a large range on offer we are sure you'll be able to find something to suit your garden and budget. To help you decide on the correct machine for you there are friendly and knowledgeable staff on hand, with the option of demonstration units which are available so you can try before you buy.



We are currently offering 3 years free servicing on selected models, add to that JOHN DEERE'S 2 years warranty and you can be assured you will have trouble free mowing for years to come.

We now hold the stihl franchise in Nantwich from which we can supply the full Stihl range, including chainsaws, brushcutters, strimmers, blowers, vacs, hedgecutters, pressure washers and complete combi units.



Contact us to discuss all your gardening needs

## SERVICE OFFER

### Powergard maintenance: fixed cost servicing with an introductory 10% discount (limited offer)

We now offer John Deere's flexible maintenance plans for your combine, SPFH and tractor range. Each plan is designed to specifically meet your needs, your budget and your operating costs, while making "uptime farming" a reality.

We can tailor a plan to your specific requirement. There are various payment methods - depending on what is most convenient and affordable to you, you can pay for the entire contract in advance, in regular instalments or pay for services as they are performed.

Not only can we now offer you fixed cost servicing for a period of time but also you can benefit from an introductory 10% reduction (for a limited period only).

For more information please contact Rob Hughes, Andy Dobson or Chris Jacques for a no obligation quote.

## ISLE OF MAN NEWS

June has yet again proved to be a very busy month for all the team working on the ISLE OF MAN who have had to install a record number of tractors/ round balers and mowers.

This month Chris Jacques joined Dusty helping with machine installations and operator training for our customers. As part of our increased commitment to customers on the island, Chris and other members of the service team will be making future trips to support our parts and service team on the island.

DUSTY 07624 366411

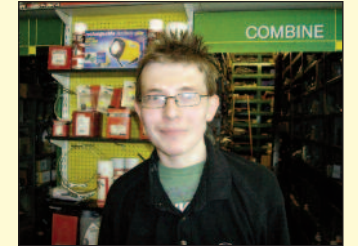
EDDIE 07624 493319  
TELEPHONE 07912 085988

MATTY 07624 496608

\*\*\*\*We now have new 644 drop floor r/balers available to see on the island. \*\*\*\*

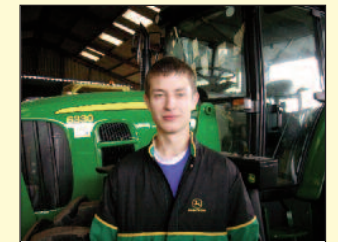
## NEW MEMBERS OF OUR AFTER SALES TEAM

We are pleased to announce that Chris Williams has joined our team. Chris has recently left a printing house where his main duties involved a high level of IT interaction. Prior to that Chris attended South Cheshire College and studied Business Studies at BTEC National Diploma Level. Chris has joined our team at Nantwich and will be a valued member of the parts department working alongside John, Steve and Chris Goff.



Also joining us at our Nantwich depot are Tim Baddeley and Adam Cooper. Tim has joined us this month having completed a 3 year National Diploma in Land Based Technology, studying at Reaseheath College – Nantwich. Tim is set to attain a distinction grade for that course which specialises in diagnosing and repairing all aspects of farm machinery. Prior to this course Tim successfully completed the First Diploma in Land Based technology. Tim is a local lad and keen to build on his knowledge to date by gaining further experience by working alongside our experienced technicians, coupled with training both in house, at John Deere and our other suppliers. Through this training, Tim will soon be on the Land Based Accreditation scheme, a standard that our company and John Deere are proud to be members of. Tim will spend his time travelling to farms, diagnosing and repairing faults with our experienced technicians as well as general servicing. He will also spend time in our depots meeting customers and learning the other skills that are required to become an all round qualified and experienced technician.

Adam Cooper, like Tim, has just completed the same 3 year Land Based Technology course at Reaseheath College. Adam has already achieved a distinction grade. Prior to that, Adam had work experience during his school years, fitting front linkages, front ptos and loaders with a local engineer. Adam continued to undertake this work during school holidays and weekends. Adam is keen to build relationships with our customers and gain experience by working alongside our experienced technicians coupled with relevant training. This foundation will allow him to progress through the LTA training scheme to become a valued all round qualified and experienced technician.



We are very pleased to introduce these three young but capable lads into our team.

### Service department office

As from March 1st this year Rob Griffiths has joined Rob Hughes in taking the day to day phone calls in the service office at Nantwich. Rob Griffiths will deputise for Rob Hughes scheduling the workshop rota. Between the "Robs" they will schedule their time to allow Rob Hughes to undertake his duties at both depots, but also very importantly allow Rob Griffiths to continue his training to become a high quality service manager, with not only in house and external training but to build on his knowledge base of the equipment that we sell. Together with his LTA4 achievement (the highest award a technician can receive in our industry), coupled with his desire to enter into the service management, we believe Rob Griffiths is the ideal candidate to take on the service management role in the future. We thank all our customers during this transition period, but between the two Robs please be assured we will do our very best to satisfy and exceed your needs.

## PARTS OFFER

### Air Conditioning Maintenance

Air conditioning systems lose refrigerant naturally at around 10-15% per annum, causing a range of secondary problems including:

- Poor cooling - most noticeable in hot weather.
- Impaired lubrication - can eventually cause compressor failure.
- Air in system - can cause excessive pressure and speed up internal system corrosion.
- Moisture in system - can cause blockage and contribute to corrosion.

### Cab Air Filters

Proper maintenance of cab air filters is absolutely vital for maximum performance of an AC system. When the recirculating air filters are plugged, or have never been serviced, the tractor's air conditioning system is forced to attempt to cool 100 percent of the outside air. This is much more difficult than cooling a mixture of recirculated air and outside air. Both performance and running costs are dramatically affected with dirty or plugged cab air filters.



← OLD

NEW →



12.5% discount off Cab and cab air recirculation filters for June – quote P0610N.

For more information call in store or visit our website [www.cornthwaiteag.co.uk](http://www.cornthwaiteag.co.uk) or [www.ag-mac.co.uk](http://www.ag-mac.co.uk)